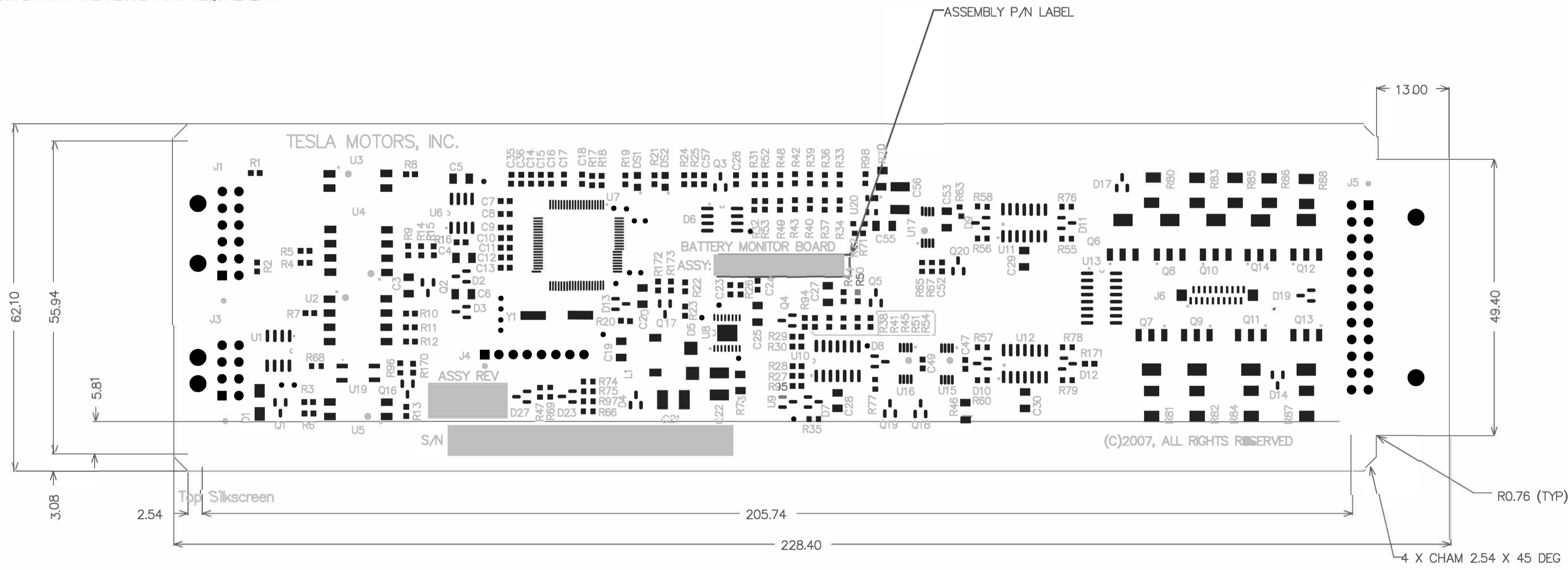


NOTES: (UNLESS OTHERWISE SPECIFIED)

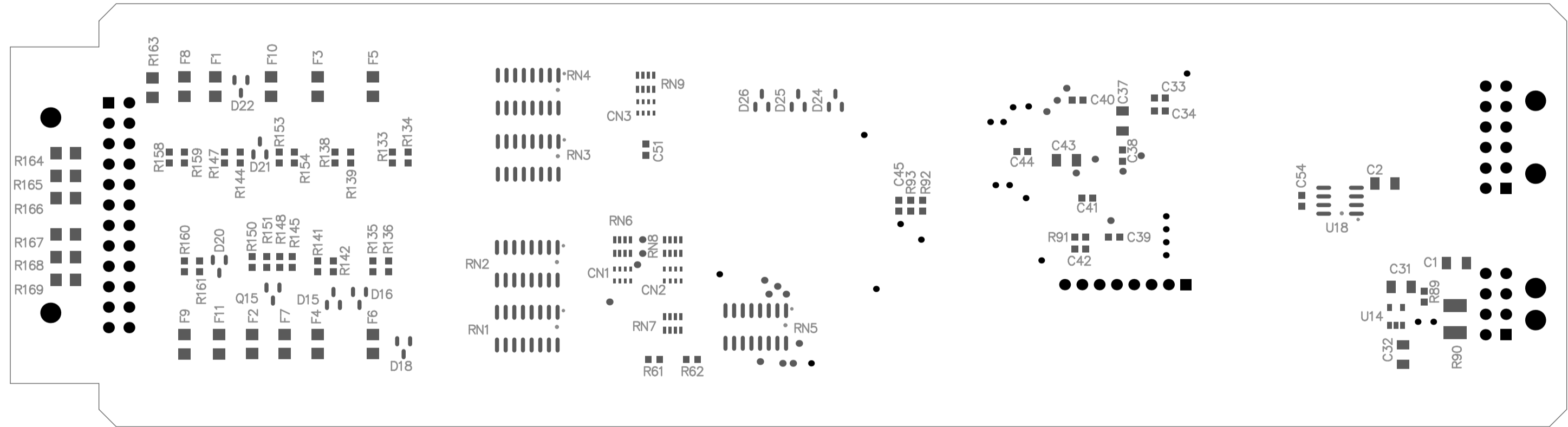
1. THIS ASSEMBLY SHALL CONFORM TO IPC-A-610 (CLASS 2) AND IPC/EIA-J-001 (CLASS 2), LATEST REVISIONS.
2. COMPONENT LEADS SHALL NOT EXTEND 0.04 IN. (1 MM) MAX. BEYOND THE BOTTOM SIDE OF THE BOARD.
3. REFER TO TESLA MOTORS PLM BOM 09-000144-01, LATEST REVISION FOR ITEM NUMBER DESCRIPTIONS.
4. FOR SCHEMATIC, REFER TO 09-000144-01, LATEST REVISION.
5. FOR SOLDER PASTE, USE 09-000144-PT.GPT (TOP SIDE), AND 09-000144-PB.GPB (BOTTOM SIDE), LATEST REVISIONS.
6. N/A
7. PLACE ASSEMBLY LABEL APPROX. WHERE SHOWN. REFER TO BOM FOR DETAILS.
 - A. LABEL TO BE UL/CSA APPROVED NON-METALIC POLYESTER (MATTE WHITE), NON-FLAMMABLE WITH TEMP RATING ≥ 105 DEG C. LABEL MATERIAL MUST SURVIVE FOR A MINIMUM OF 5 YEARS IN THE AMBIENT ENVIRONMENT (REMAINING ATTACHED AND READABLE).
8. SOLDER:
 - ALL SOLDER MATERIALS USED ON THIS ASSEMBLY SHALL BE APPROVED BY TESLA MOTORS.
 - REWORK SOLDER AND FLUX MUST BE COMPATABLE WITH A NO-CLEAN SMT PROCESS.
 - ALL SOLDER WIRE USED FOR REWORK SHALL HAVE A NON-CORROSIVE, NON-CONDUCTIVE FLUX.
 - ALL FLUX USED FOR REWORK SHALL BE NON-CORROSIVE AND NON-CONDUCTIVE.
9. CLEANLINESS:
 - EXCEPT WHERE NO-CLEAN SOLDER IS USED, AN ACCEPTABLE AQUEOUS CLEAN PROCESS SHALL BE USED.
 - ALL REWORK SHALL BE SPOT CLEANED EXCEPT WHERE NO-CLEAN SOLDER IS USED.
- [R] 10. ALL MATERIALS AND COATINGS MUST COMPLY WITH EU DIRECTIVE 2000/53/EC (ELV DIRECTIVE).
- [R] 11. THIS COMPONENT HAS BEEN DESIGNED TO COMPLY WITH A REGULATORY REQUIREMENT. CONTACT TESLA TYPE APPROVAL BEFORE UNDERTAKING DESIGN MODIFICATIONS. A COMPONENT WHICH EMBODIES ALL REQUIREMENTS STATED ON THIS DRAWING WILL COMPLY WITH THE REGULATORY REQUIREMENT.



R0.76 (TYP)
4 X CHAM 2.54 X 45 DEG

ENGINEER:	TITLE:	
PCB DESIGNER:	ASSY, BATTERY MONITOR PCB	
DATE:	PART NO.:	REV.:
FILE NAME:	DWG NO.:	SCALE:

1



Bottom Silkscreen